

# LINCOLN STAR PROJECT



Criterium Management Co

# LINCOLN COUNTY INITIATIVE



On June 18th, 2024, the Lincoln County Commissioners partnered with Criterium Management Company to foster sustainable economic development. This proposal outlines our plan to significantly enhance the local economy.

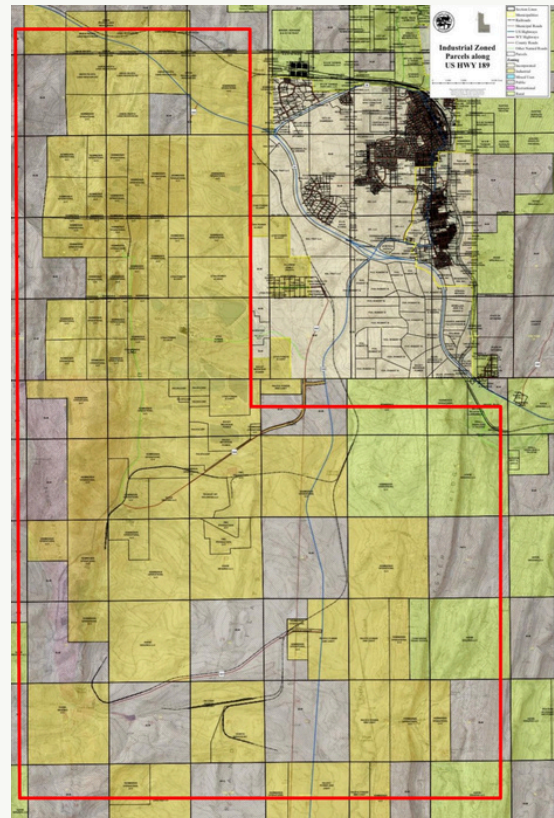
For the past three years, we have collaborated with local governments and businesses to establish strategic partnerships, aiming to build shared infrastructure that supports natural economic growth. With proven success in other rural communities, we believe Lincoln County is poised to enter a new era of economic prosperity.

# LINCOLN STAR IMPROVEMENT & SERVICE DISTRICT

The initial priority is establishing the Lincoln Star Improvement & Service District (ISD) in the Industrial area of Lincoln County, Wyoming.

An ISD is a district created to enhance infrastructure and provide needed services, supporting economic development and improving the quality of life for residents and businesses.

The Lincoln Star ISD will focus on developing and maintaining shared infrastructure critical for economic growth and community well-being. This includes, but is not limited to:



**\*\*ISD location not finalized.\*\***

Wastewater  
Management

Rail  
Access

Power  
Infrastructure

Water  
Management

Fiber Optic  
Network

Roads &  
Transportation

# ISD ADVANTAGES

The creation of the Lincoln Star Improvement & Service District (ISD) presents a unique opportunity for local landowners to actively support and benefit from the economic growth of Lincoln County. By establishing an ISD, landowners can raise additional funds through public and private sources, implement changes swiftly, and lead infrastructure development in the industrial area.

This approach provides enhanced funding, increased control, flexibility in decision-making, and a significant impact on shared infrastructure, ultimately leading to a prosperous future for the entire community.



## Funding



---

Additional funding opportunities through public and private funds



## Control



---

Appointed Board of landowners maintains control



## Flexibility



---

Reduced redtape and costly procedures to make changes



## Impact



---

Create great impact through building shared infrastructure

# TRACTION

This process began over three years ago and has already made significant strides. We have established relationships poised to sign contracts, with others still in active discussions. Additionally, we are diligently researching optimal grant opportunities to maximize state and federal funding for rural development. We are very optimistic about the current momentum and look forward to increased local engagement and discussion.



Coal-to-Humates



Coal-to-Ammonia Plant



Transloading Docks



Hydroponic Farming



Industry Park



Data Centers



Sorghum

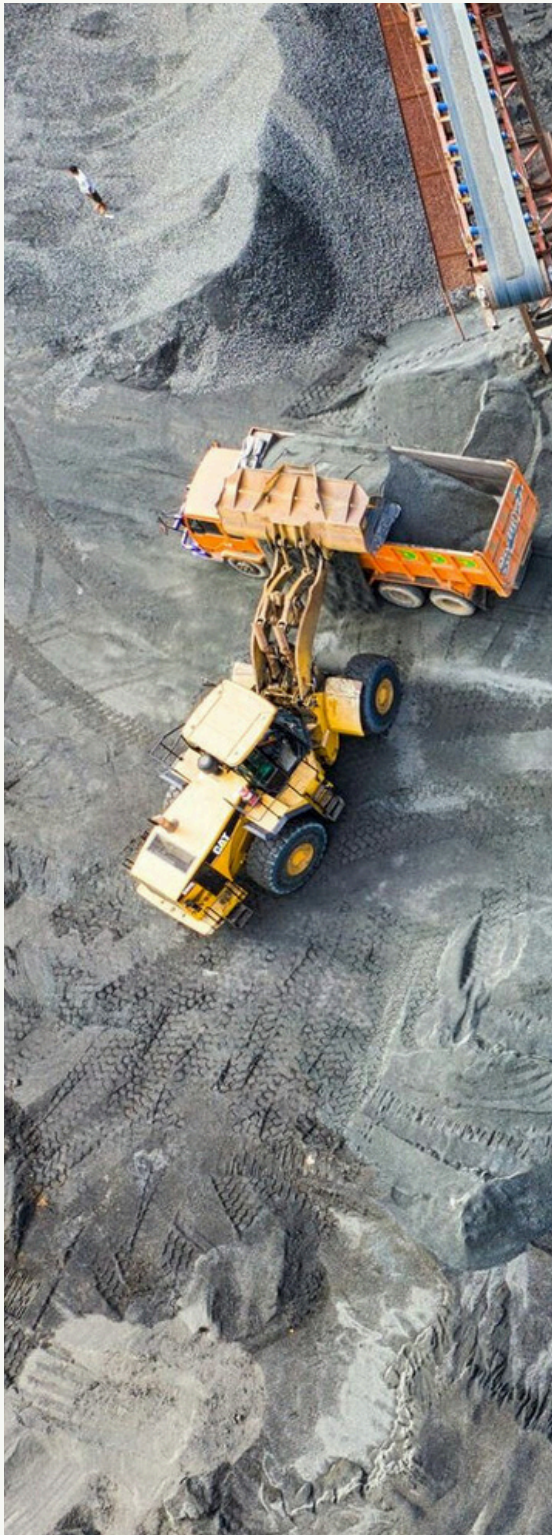


Zero-Emission Asphalt]



Alternative Coal Uses

# ROADMAP



## 2024



### ISD PLAN & CREATION

---

- Create and submit ISD for approval
- Apply for the initial wave of grant funding
- Raise funds and finalize relationships

## 2025



### BREAK GROUND

---

- Complete ISD process by Q3 '25
- Select ISD Board members
- Begin construction on initial projects

## 2029



### STRATEGIC PARTNERSHIPS

---

- Initial projects operational
- Initiatives to support local SMB's
- New regional and national partners

## 2044



### QUALITY OUTCOMES

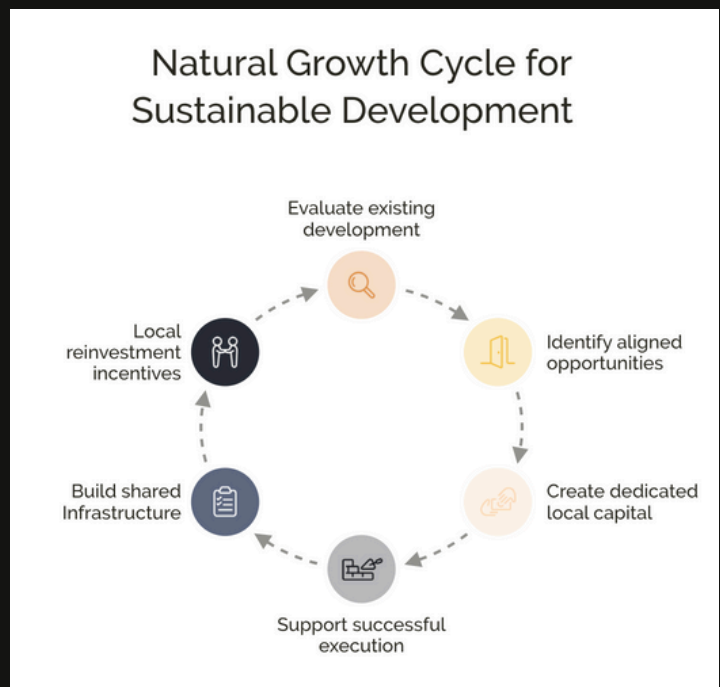
---

- Increased economic momentum
- Growing workforce population
- Revitalized coal production
- Local capital pool available

# CRITERIUM MANAGEMENT COMPANY

**Criterion Management Company** is a Wyoming LLC dedicated to building sustainable communities where people want to live and work. With a proven history of success, the Criterion strategy creates a sustainable economic engine that generates natural long-term growth in local economies.

Criterion uses collaborative relationships to catalyze sustainable development by investing in infrastructure projects that enhance economic growth, create jobs, and improve living standards.



## 1 - MARKET

Identify large market opportunities that are poised to grow and disrupt

## 2 - MANAGEMENT

Create collaborative relationships led by strong management teams

## 3 - MACHINE

Analyze existing local economic trends to drive sustainable growth

## 4 - MONEY

Provide local capital to build, support and scale strategic businesses

# THE TEAM



## MITCH WEAVER

Managing Director

Senior executive for Fortune 500 companies, has led initiatives in early growth to scale, strategic restructuring & turnarounds, organic business growth



## ED EKSTROM

Managing Director

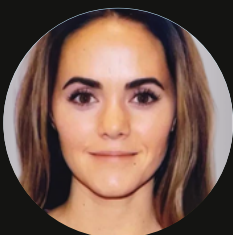
Founder of vSpring Capital and Cericor, Intel Executive over 10 years, Former Utah IT Association chairman, has led investments in over 50 companies



## JIM HORTON

Managing Director

Finance, management, and corporate strategist; founded Andina Capital Management and H2M Capital.



## AMY HANCOCK

Chief Portfolio Officer

Business consultant of over 20 years with expertise in turnaround management, collaborating with government, non-profit, and SMB organizations.



## MIKE EKSTROM

Chief Information Officer

Mike has over 30 years of experience in building, maintaining, and growing enterprise class services for IT, health care and academic organizations



## BOB MILLERBERG

EVP Business Development

An experienced 40-year veteran in agriculture, developing a 3000 acre solar farm, and received *Fastest Growing Company in Utah* award during 2015-2016.



# WE WANT TO HEAR FROM YOU



We understand in the power of collaboration, and we value your experience, perspectives and ideas.

We look forward to hearing from you.

**PHONE**

---

+1 (385) 628-9043

**EMAIL**

---

[EEKSTROM@CRITERIUMMANAGEMENT.COM](mailto:EEKSTROM@CRITERIUMMANAGEMENT.COM)